



# Newsletter - 09

May 2026

Florence Fields, Parkway, Kings Lynn



Welcome to the ninth newsletter for our Florence Fields project, delivered in partnership with the Borough Council of King's Lynn and West Norfolk.

We all hope you all had a good start to the year so far. Our last newsletter, sent in January, shed some light on the challenges we faced and progress we made over the winter and some of the great initiatives we took part in during this period. We hope you found it informative.

If you have any questions or concerns during this construction project the best people to speak to are the site managers - 08:00-16:30 Monday-Friday:

Dan Saxon - 07721 676860

Paul Dean - 07353 895986

Alternatively, you can pop to site and ask the gate person to contact the team so your question or concerns can be addressed.

In case of an emergency please ring **0800 600 7695**.

Regards, Lovell Team

## COMPLETED WORKS AND WHAT'S COMING UP



Phase 3 has progressed well and we have a number of new residents who have moved in since the last newsletter. We are working on the block of flats, and you can see we have put the solar panels on the roof, which will help to make them really energy-efficient. We are due to be fully watertight within the next couple of weeks and scaffold can start to come down within the next month.

Phase 4 is all under construction now. Progress on the homes ranges from ground floor brickwork right through to the final stages of external construction. The first three homes are due for completion at the end of June. As part of these handovers, we are moving out of our site offices and into 2 houses to allow the public open space on the development to be formed. This area will look fantastic once it is complete, giving the scheme a lovely open feel.



Phase 5 has started, with the sub-structures all underway. Bricklayers are due to start on this section in the coming weeks.

Phase 6, which is our final phase on the scheme, has started with piling. We aim to complete all the sub-structure pads to be before the end of August this year.

# SITE PROGRESS PHOTOGRAPHS



## INTERESTING FACT

Did you know Gaywood is actually older than King's Lynn itself?

The area was once a separate medieval village and King's Lynn was originally carved out of Gaywood's land in the late 11th century.

That means Gaywood can be thought of as the "parent" settlement, with King's Lynn later growing into the much larger town that eventually surrounded it.

Bonus interesting bit:

A medieval palace belonging to the Bishop of Norwich once stood where Gaywood Hall is today, showing how important the area was hundreds of years ago.

## SCHEME BENEFITS

**You're not alone**

**Built for Biodiversity**

By caring for the natural world where we live, we're creating safe spaces for essential species.

From bee bricks and bat boxes to hedgehog highways and wildflower planting, we're ensuring that our homes co-exist with those of bats, birds and pollinators.

Protecting them helps protect our environment, making it a healthier and more beautiful place for everyone.

Take a look at our **Wildflower Area** from the window in Bedroom 1

Swifts are truly extraordinary creatures, spending nearly their entire lives soaring through the skies. In fact, a Swift can fly a distance equivalent to traveling to the moon and back - four times over the course of its life!

Sadly, in the past 25 years, the Swift population in the UK has plummeted by more than 60%, primarily due to the loss of their nesting habitats.

These birds typically return to the same nesting sites each year, and when these locations are lost due to renovations, demolitions, or insulation repairs, many Swifts struggle to find new homes.

To combat the decline of these magnificent birds in the UK, Lovell are implementing S Bricks in new developments, to create safe and lasting nesting spaces. These bricks are the same size as standard house bricks, seamlessly integrated into the building, fireproof, and require no upkeep, all while providing essential shelter for a family of Swifts.

**Did you know?** Hedgehog highways create safe passages for hedgehogs, connecting habitats and supporting their movement and survival.

## COMMUNITY EVENTS

### Open doors event:



On 25th March NeneGate School attended site for our Open Doors event. Students were given a site tour and a presentation by the Contracts Manager and Site Manager on the types of roles within construction and the process of building a house. The children were really engaged and asked some great questions throughout the tour.

### Lovell Work Experience week:



At the end of April Lovell hosted a Work Experience Week in Kings' Lynn. We invited 13 students from local schools to explore what a career in construction looks like. Throughout the week the students gained insight into the wide range of opportunities with hands-on practical experience, interactive classroom learning, inspirational guest speakers and career pathway insights to really show the wide range of opportunities construction has to offer.



The Borough Council attended our Work Experience Week to share their knowledge and experience of the construction industry with the students and we talked about how the partnership between the Council and Lovell works. The Principal Project Manager and Project Officer also shared their career journeys with the students to show how different routes into the construction industry really do work.

Hopefully the students have been inspired to take up a career in the construction industry and be part of forming are communities in the future.

## OPEN SPACE AREAS

During the construction of the site we have had to remove a small number of trees to allow the build to continue.

We have saved some of this wood and intend to make some sculptures from the wood we have kept. We would like to ask the local community for your suggestions on what could be made from the wood. We had thought about a chair, bench or an animal sculpture - something connected to the local area would be great, but we would really like to hear from you.

If you have any ideas or suggestions please email us at -

[corporateprojects@west-norfolk.gov.uk](mailto:corporateprojects@west-norfolk.gov.uk)

Please submit your ideas to us by **1<sup>st</sup> July 2026**.

## KINGS LYNN ACADEMY UPDATE

Works are progressing well on site. Both the dining hall extension and the new standalone DT block have now had their steel frames erected, with windows being installed and roofs made watertight. This allows works to continue to both the external and internal elements of each building.

The first stage of the internal refurbishment works is also underway and remains on track for completion by the end of May 2026.

In addition, improvements to the car park are progressing, including the installation of two brand-new cycle stores, which will be handed over for use shortly.

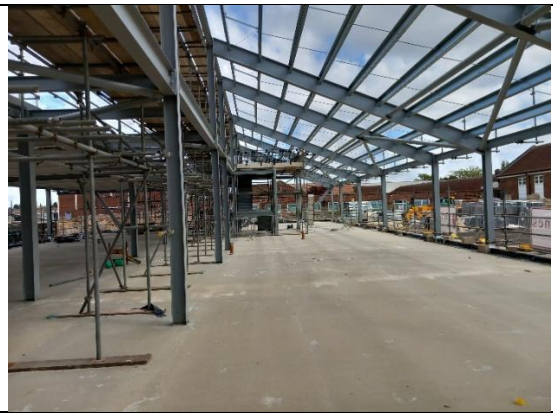
The dining hall is anticipated to be ready for handover in time for the start of the new school term in September 2026, with the DT block following closely behind in early October 2026.



Kitchen & Dining hall extension



New cycle store



New standalone DT block

## CHARITY EVENTS

**24HR TRACK CHALLENGE**  
Take 2!

Walk or run, day or night, help us complete the challenge and book a 30 min slot!  
Friends and family welcome to join in at Lynnsport

**START:**  
12pm on Friday 5 June

**FINISH:**  
12pm on Saturday 6 June

Contact [Corporateprojects@west-norfolk.gov.uk](mailto:Corporateprojects@west-norfolk.gov.uk) to book a slot or support others by becoming a marshal.

Event organised in conjunction with Lovell.

Money raised will be split between The purfleet trust and St Martins charities.

Scan for Charity link.

**LOVELL**

**the purfleet trust**  
supporting homeless people

**St Martins**  
more than a home for the homeless

**Borough Council of King's Lynn & West Norfolk**



Lovell and the Borough Council have decided to take on the 24-Hour Track Challenge round 2!

Colleagues from Lovell and the Council will be taking part in a continuous 24-hour challenge at Lynnsport on 5<sup>th</sup> & 6<sup>th</sup> June.

For this event, we need to keep people moving on the track continuously for 24 hours (walking or running), with

participants able to do as little or as much as they wish.

This is the second time the team are holding this event. The overnight hours were the hardest to fill last time, particularly from midnight to 6 am as I'm sure you can imagine.

## MINIMISING LANDFILL

As a partnership that cares about the impact of construction on the environment, we are always striving to eliminate the waste we create during the construction process. This in turn reduces the amount of waste that goes to landfill. Typically, Lovell will use this approach:

**REDUCE:** can we prevent and reduce waste generation in the first place?

**REUSE:** can we give the products a second life before they become waste?

**RECYCLE:** can waste materials be re-processed into products, materials, or substances whether for the original or other purposes?

**RECOVERY:** if we can't reuse or recycle, can we incinerate to produce alternative energy?

**DISPOSAL:** as a last resort, some waste is sent to landfill. Currently only 0.28% of Lovell waste goes to landfill. 99.72% gets reused/recycled etc.

## MINIMISING DISRUPTION

We would like to thank you for your patience regarding construction vehicle movement into and out of site, particularly with the size of some of our deliveries.

We appreciate that construction projects have an impact on our neighbours and surrounding residents.

The designated site working hours are:

7:30am - 5:00pm Monday to Friday, with occasional Saturday mornings (if necessary). Deliveries are between 8:00am and 4:00pm.

## DANGERS OF BUILDING SITES

We know building sites hold great interest for some people, especially youngsters, and we would ask you to remind children of the dangers of building sites, in particular young children and teenagers.

Please be particularly aware of the lorries delivering to and leaving the site. Please make sure you are seen, and we can see you!

Lovell Partnerships take care to ensure the site perimeter is safe and secure and the site is fully locked up at the end of each day. Our gateperson works tirelessly to ensure public safety at the site entrance and cleans all vehicles leaving site.

## CONSIDERATE CONSTRUCTORS SCHEME

### CONSIDERATE CONSTRUCTORS SCHEME

The site has been registered with the Considerate Constructors Scheme (CCS), which means that how we interact with our neighbours and operate our site will be assessed by an independent body. More information on CCS can be found at [www.ccscheme.org.uk](http://www.ccscheme.org.uk).

CCS is an independent scheme that monitors our construction site against a code of considerate practice, designed to encourage best practice beyond statutory requirements.

There are three main areas monitored:

- **Respect the Community** - Constructors should give utmost consideration to their impact on neighbours and the public
- **Care for the Environment** - Constructors should protect and enhance the environment
- **Value their Workforce** - Constructors should provide a supportive and caring working environment

At Lovell we pride ourselves on community engagement. Throughout this development we will be looking for local projects or charities to support: if you have any suggestions for this please contact us.

If you want to comment on our site or workforce, please contact Lovell Partnerships on 01603 709800 or the Considerate Constructors Scheme on 0800 783 1423, quoting our registration number **512272**.



In April we were nominated for another Considerate Constructors award and the team is pictured receiving a bronze award at the National Site Awards in London.

We had hoped with the feedback we received that we might have achieved a silver award but it has made us more determined to get that next year!

# LOVELL

## MEET THE TEAM



**TREVOR HAYSTEAD**  
REGIONAL OPERATIONS  
DIRECTOR



**MICHAEL SAUNDERS**  
OPERATIONS MANAGER



**KYLE FARR**  
CONTRACTS MANAGER



**ADRIAN BOULTER**  
HEALTH, SAFETY &  
ENVIRONMENTAL MANAGER



**DAN SAXON**  
SITE MANAGER



**PAUL DEAN**  
SITE MANAGER



**AARON WARD**  
ASSISTANT SITE  
MANAGER



**ALEX FLETCHER**  
TRAINEE ASSISTANT  
SITE MANAGER



**RYAN BUDD**  
Telehandler Operator



**ELLIOT PRIOR**  
Telehandler Operator



**JOE ATKINSON**  
LABOURER



**PERRY BUDD**  
GATEMAN

**Parkway, King's Lynn**

CONSIDERATE  
CONSTRUCTORS  
SCHEME





**Go To Town**

# Service 5

Hourly Service

7.30am to 6.30pm Mon - Fri

8.30am to 5.30pm Saturdays

**£1.50 single fare**

Providing a direct link from Gaywood to  
Kings Lynn Train and Bus stations

For more information and bus times visit  
[www.gtt-online.co.uk](http://www.gtt-online.co.uk)

