

Frequently asked questions

What is this consultation about?

In this initial consultation, we want to know whether or not residents want King's Lynn to be parished and a new Parish/Town Council set up to serve the area. The map below shows the area of King's Lynn that is currently 'unparished'.

As a guide, boundaries between parishes should, where possible, either reflect the 'no-man's land' between communities represented by areas of low population or by clear physical barriers. Settlements should not normally be split across parish boundaries.

What services would the new Parish/Town council provide?

Parish/Town councils represent their residents, giving their community a stronger democratic voice with larger authorities, local police, health services and national government. The specific services Parish/Town councils run often differ from council to council, depending on the parish size, level of income and property owned. This will be considered during the next stages of this review, if it is decided to move forward.

As a few examples from other areas, parish services can include allotments, car parks, celebrations and festivals, community centres, litter bins, parks and open spaces, benches, public toilets, neighbourhood planning, and grants for community projects. If a parish is established in King's Lynn, the Mayor and historic civic functions would become part of the parish responsibilities.

How much Council Tax would I pay?

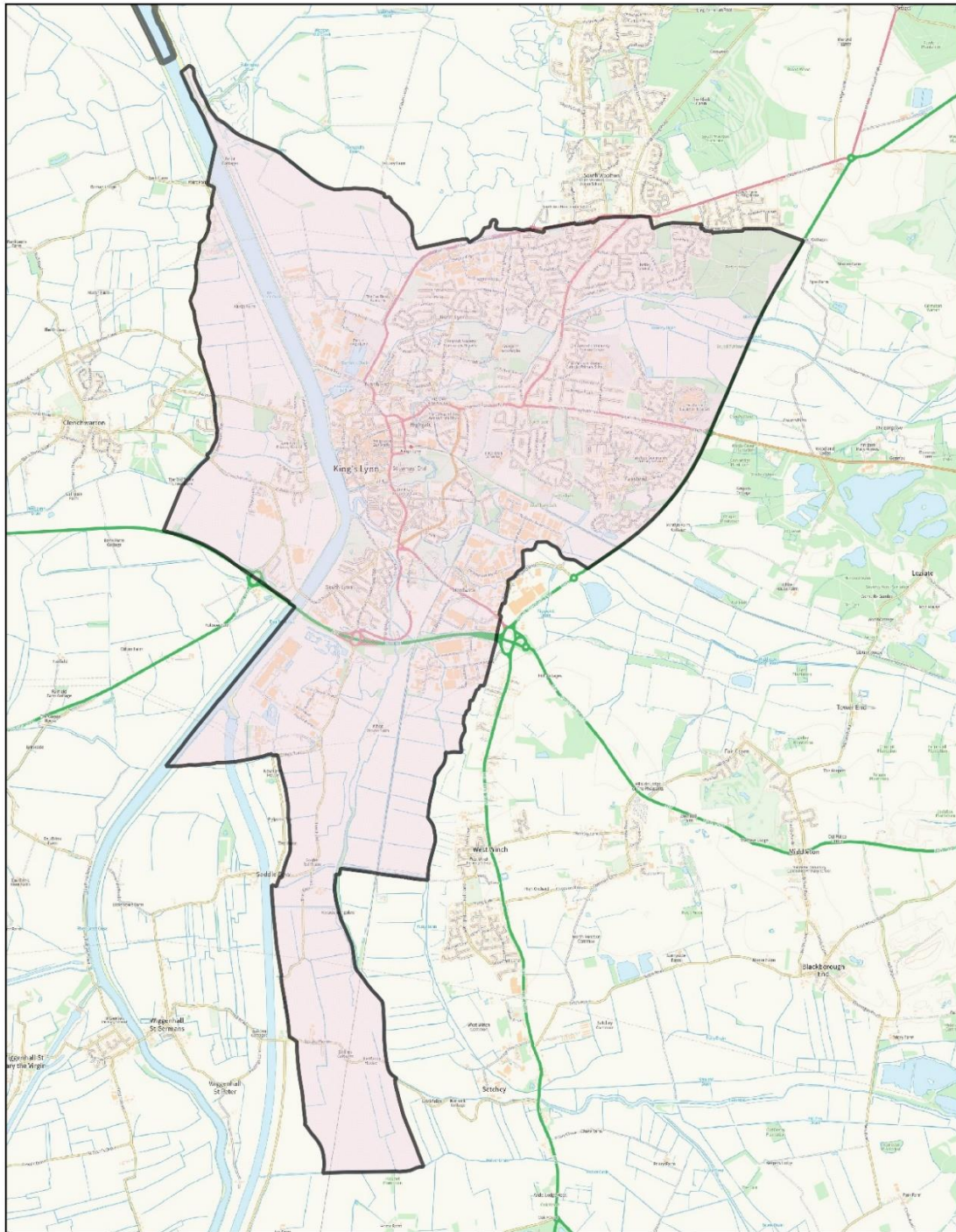
Currently, households in the King's Lynn unparished area pay a Special Expenses charge as part of Council Tax to cover work we do as a Borough council that a Parish/Town council would typically do. This charge is set annually by us and is £55.99 in 2025/26 for Band D properties.

If a Parish/Town council is established, all or some of this Special Expenses charge would be replaced by a charge known as a 'parish precept', set annually by Parish/Town councillors to support their services. The precept varies from place to place. As a guide, the average Parish Precept set by Parish councils across West Norfolk is £64.02 in 2025/26 for Band D properties.

The full list of parish precepts in West Norfolk is available here: https://www.west-norfolk.gov.uk/homepage/135/town_and_parish_precept_20252026

Who decides whether or not to create new Parish/Town councils?

We are at the start of a multi-stage review process that can include up to two or three public consultations. Full Council at the Borough council will consider public feedback and make the decision. Our borough councillors must ensure that any new arrangements are effective, convenient, and reflect the identities and interests of the community. Having this review does not guarantee we will progress to creating any parishes.



Borough Council of
King's Lynn &
West Norfolk

© Crown copyright and database rights 2026
Ordnance Survey AC0000819234

Unparished area of King's Lynn



1:35,000

22/01/2026

To view a more detailed version of this map, please visit:

www.west-norfolk.gov.uk/kingslynncqr