

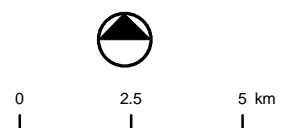
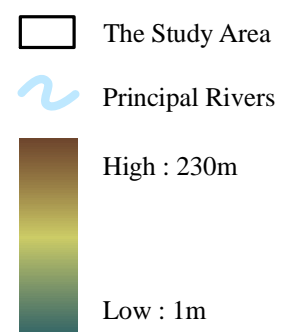
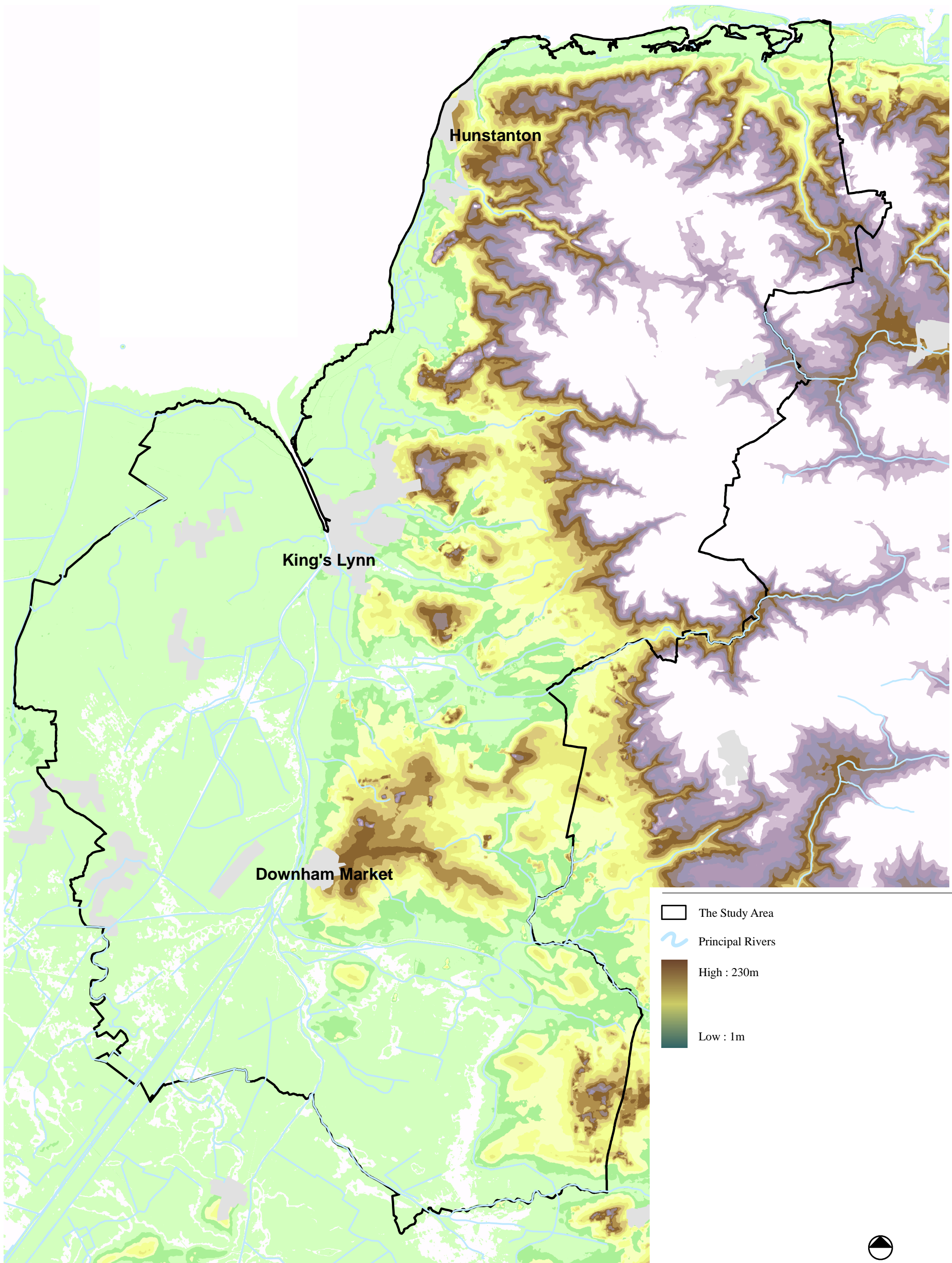


This map is based on Ordnance Survey material with the permission of Ordnance Survey on behalf of the Controller of Her Majesty's Stationery Office © Crown copyright. Unauthorised reproduction infringes Crown copyright and may lead to prosecution or civil proceedings. OS Licence Number 100024314 2007, King's Lynn & West Norfolk Council 2007

KING'S LYNN & WEST NORFOLK BOROUGH
LANDSCAPE CHARACTER ASSESSMENT

 CHRIS BLANDFORD ASSOCIATES
www.cba.uk.net
March 2007

Figure 1.1
The Study Area

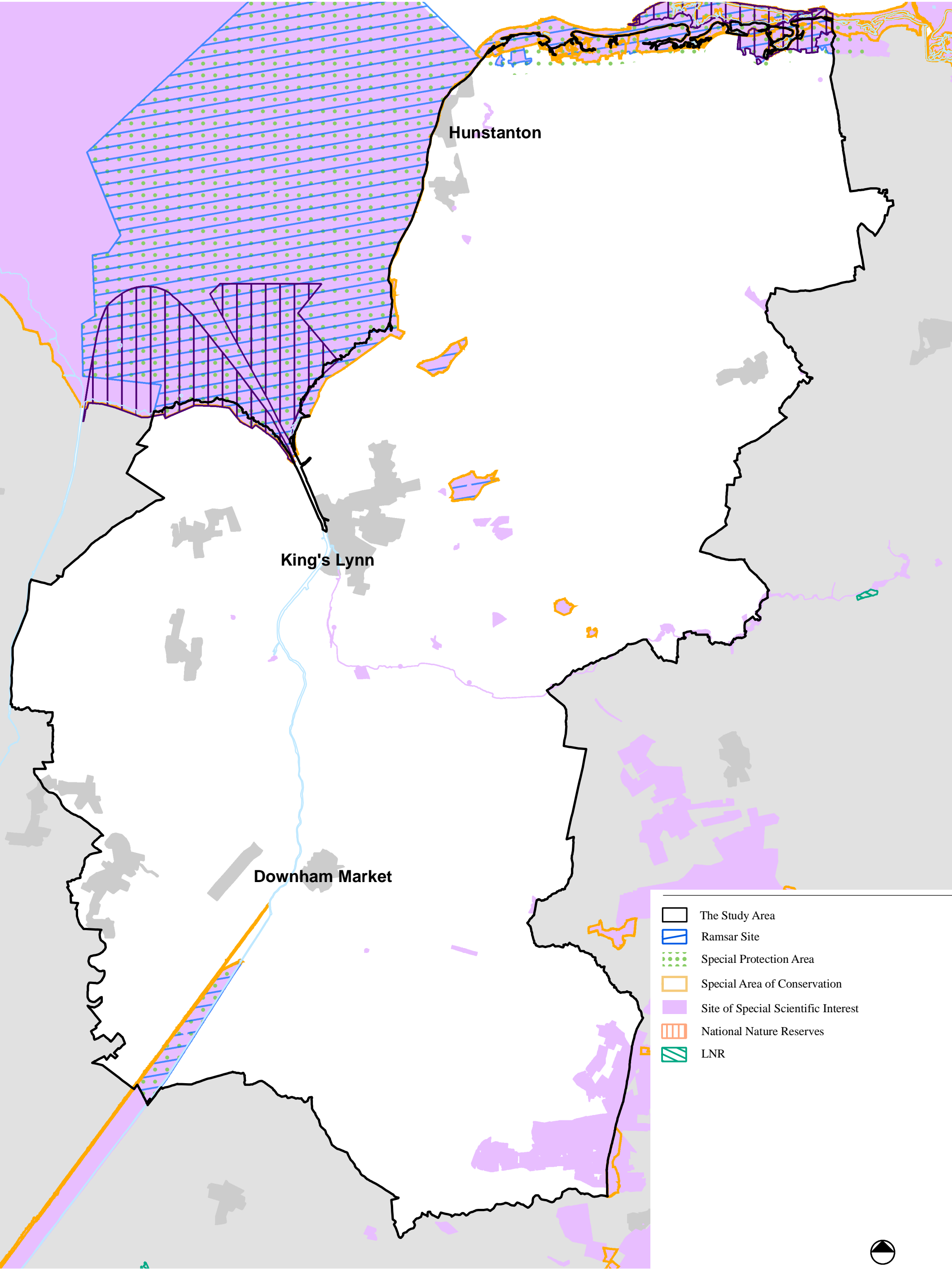


This map is based on Ordnance Survey material with the permission of Ordnance Survey on behalf of the Controller of Her Majesty's Stationery Office © Crown copyright. Unauthorised reproduction infringes Crown copyright and may lead to prosecution or civil proceedings. OS Licence Number 100024314 2007, King's Lynn & West Norfolk Council 2007

KING'S LYNN & WEST NORFOLK BOROUGH
LANDSCAPE CHARACTER ASSESSMENT

CHRIS BLANDFORD ASSOCIATES
cba
www.cba.uk.net
March 2007

Figure 2.2
Landform and Drainage



This map is based on Ordnance Survey material with the permission of Ordnance Survey on behalf of the Controller of Her Majesty's Stationery Office © Crown copyright. Unauthorised reproduction infringes Crown copyright and may lead to prosecution or civil proceedings. OS Licence Number 100024314 2007, King's Lynn & West Norfolk Council 2007

KING'S LYNN & WEST NORFOLK BOROUGH
LANDSCAPE CHARACTER ASSESSMENT


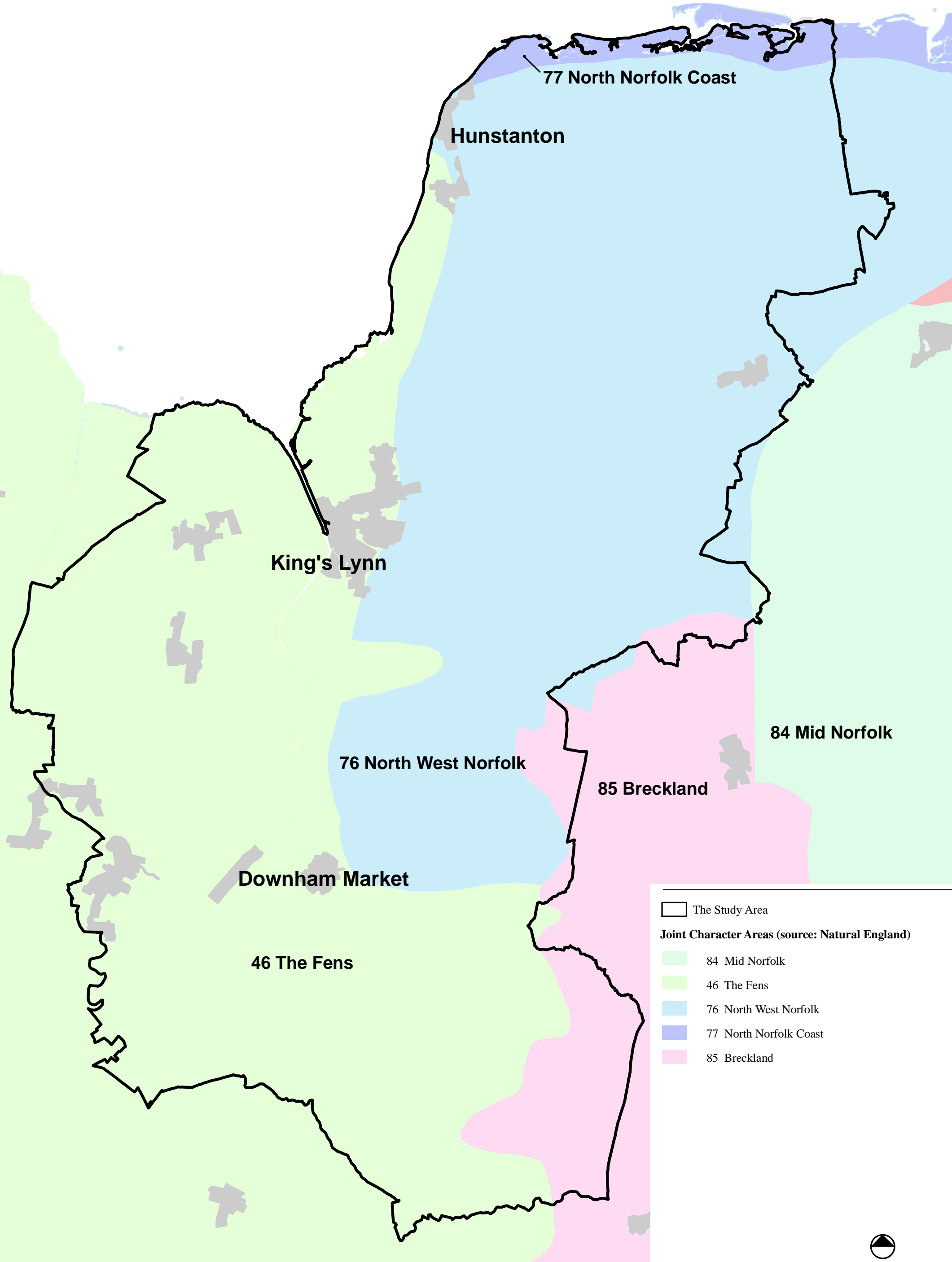
 CHRIS BLANDFORD ASSOCIATES
www.cba.uk.net
March 2007

Figure 2.3
Nature Conservation Designations



This map is based on Ordnance Survey material with the permission of Ordnance Survey on behalf of the Controller of Her Majesty's Stationery Office © Crown copyright. Unauthorised reproduction infringes Crown copyright and may lead to prosecution or civil proceedings. OS Licence Number 100024314 2007, King's Lynn & West Norfolk Council 2007

KING'S LYNN & WEST NORFOLK BOROUGH
LANDSCAPE CHARACTER ASSESSMENT


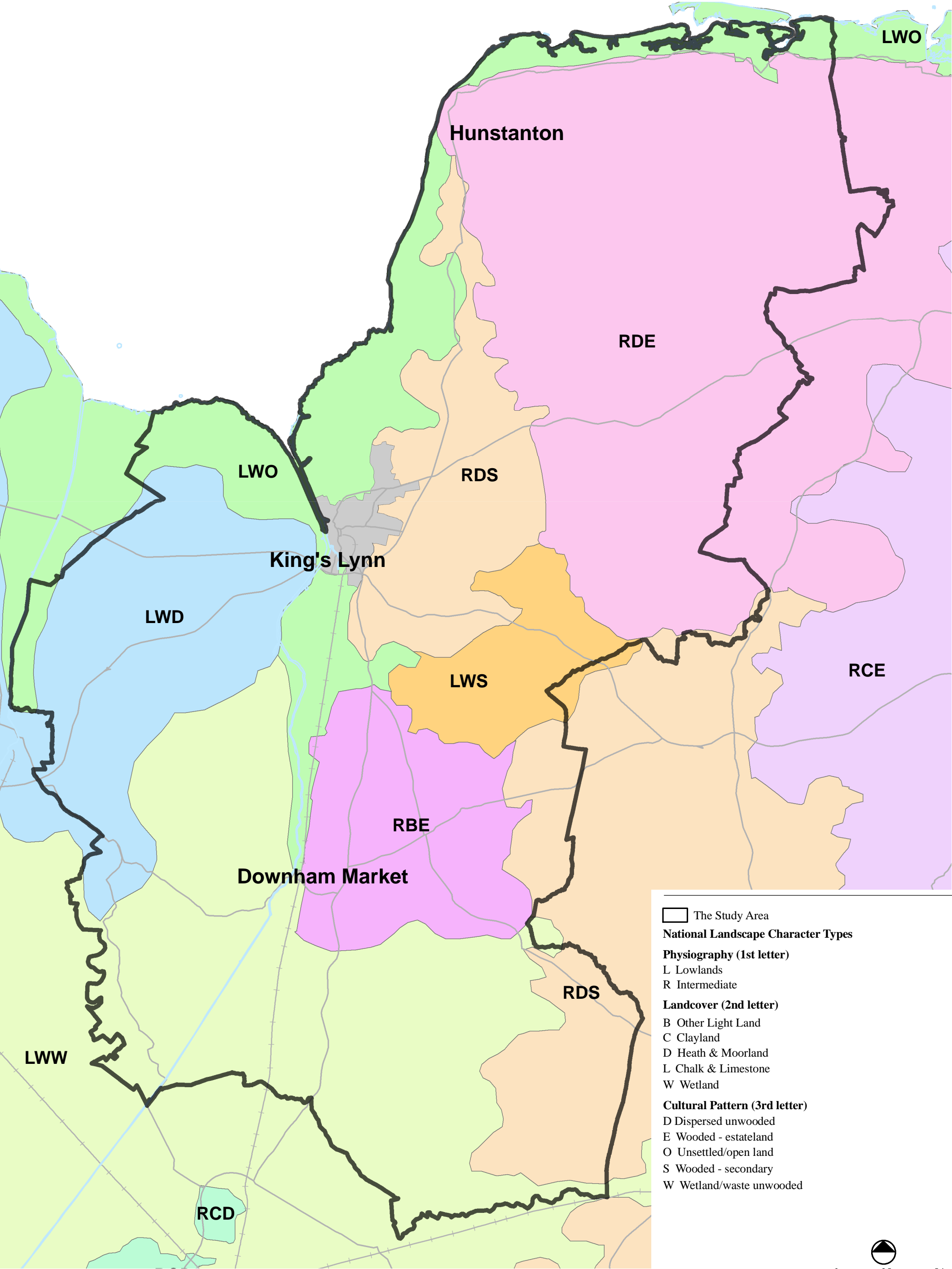
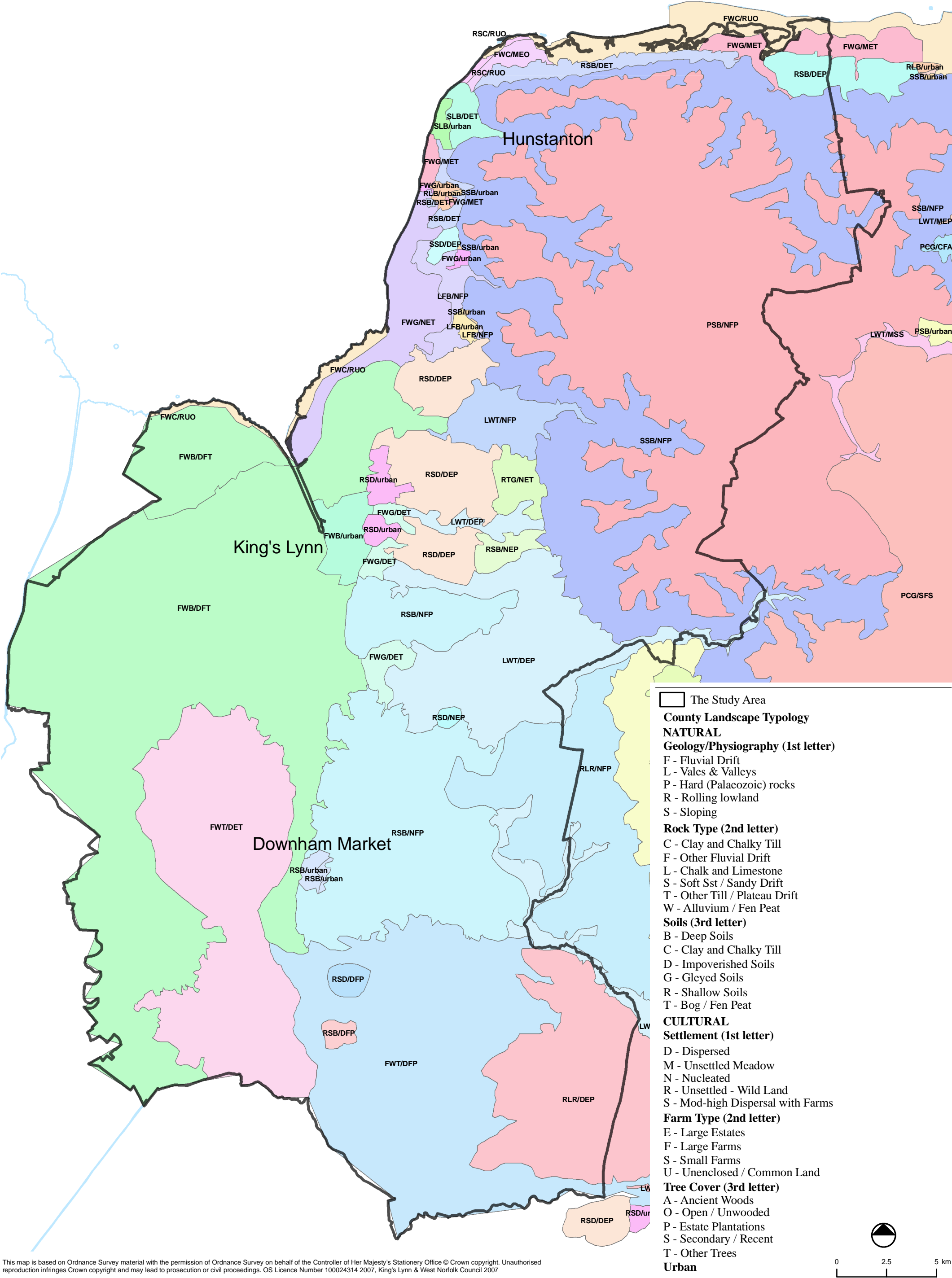
 CHRIS BLANDFORD ASSOCIATES
www.cba.uk.net
March 2007

Figure 3.1
National Joint Character Areas (1:250,000)



This map is based on Ordnance Survey material with the permission of Ordnance Survey on behalf of the Controller of Her Majesty's Stationery Office © Crown copyright. Unauthorised reproduction infringes Crown copyright and may lead to prosecution or civil proceedings. OS Licence Number 100024314 2007, King's Lynn & West Norfolk Council 2007, Natural England 2007

Figure 3.2
National Landscape Typology (1:250,000)



This map is based on Ordnance Survey material with the permission of Ordnance Survey on behalf of the Controller of Her Majesty's Stationery Office © Crown copyright. Unauthorised reproduction infringes Crown copyright and may lead to prosecution or civil proceedings. OS Licence Number 100024314 2007, King's Lynn & West Norfolk Council 2007

KING'S LYNN & WEST NORFOLK BOROUGH
LANDSCAPE CHARACTER ASSESSMENT


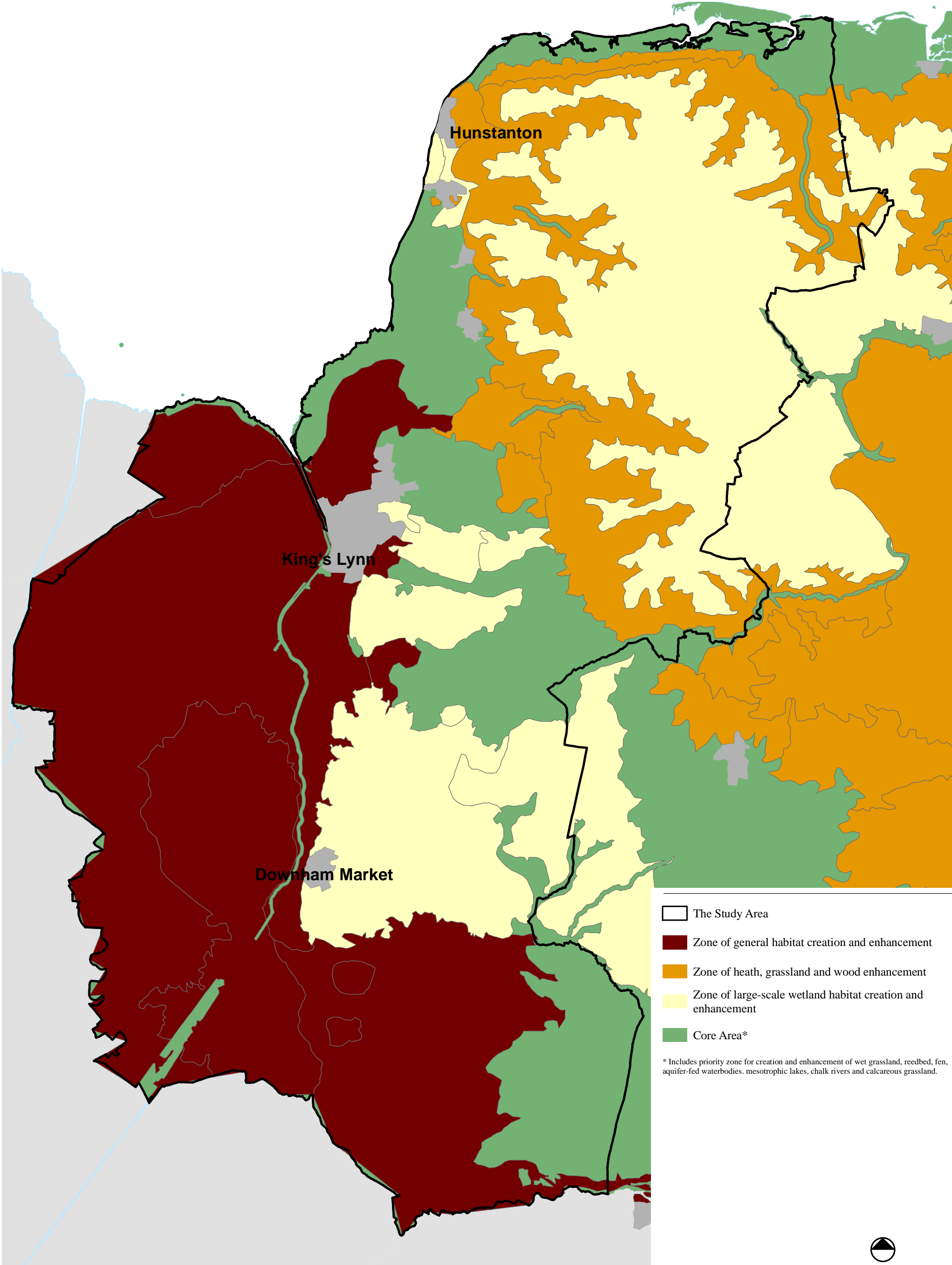
 CHRIS BLANDFORD ASSOCIATES
www.cba.uk.net
March 2007

Figure 3.3
County Landscape Typology



This map is based on Ordnance Survey material with the permission of Ordnance Survey on behalf of the Controller of Her Majesty's Stationery Office © Crown copyright. Unauthorised reproduction infringes Crown copyright and may lead to prosecution or civil proceedings. OS Licence Number 100024314 2007, King's Lynn & West Norfolk Council, Norfolk Biodiversity Partnership/NWS/Norfolk Wildlife Trust 2007

**KING'S LYNN & WEST NORFOLK BOROUGH
LANDSCAPE CHARACTER ASSESSMENT**

CHRIS BLANDFORD ASSOCIATES
cba
www.cba.uk.net
March 2007

Figure 3.4
Ecological Network

- The Study Area
- Landscape Character Areas

A - Open Coastal Marshes

A1 Terrington

A2 North Wootton

A3 Shepherd's Port

A4 Heacham

A5 Old Hunstanton

A6 Holme next the Sea

A7 Thornham and Titchwell

A8 Brancaster

A9 Overy Creek

B - Drained Coastal Marshes

B1 Terrington

B2 North Wootton

B3 North Heacham

C - Coastal Slopes

C1 Heacham

C2 Holme next the Sea to Brancaster

C3 Burnham Overy

D - The Fens - Settled Inland Marshes

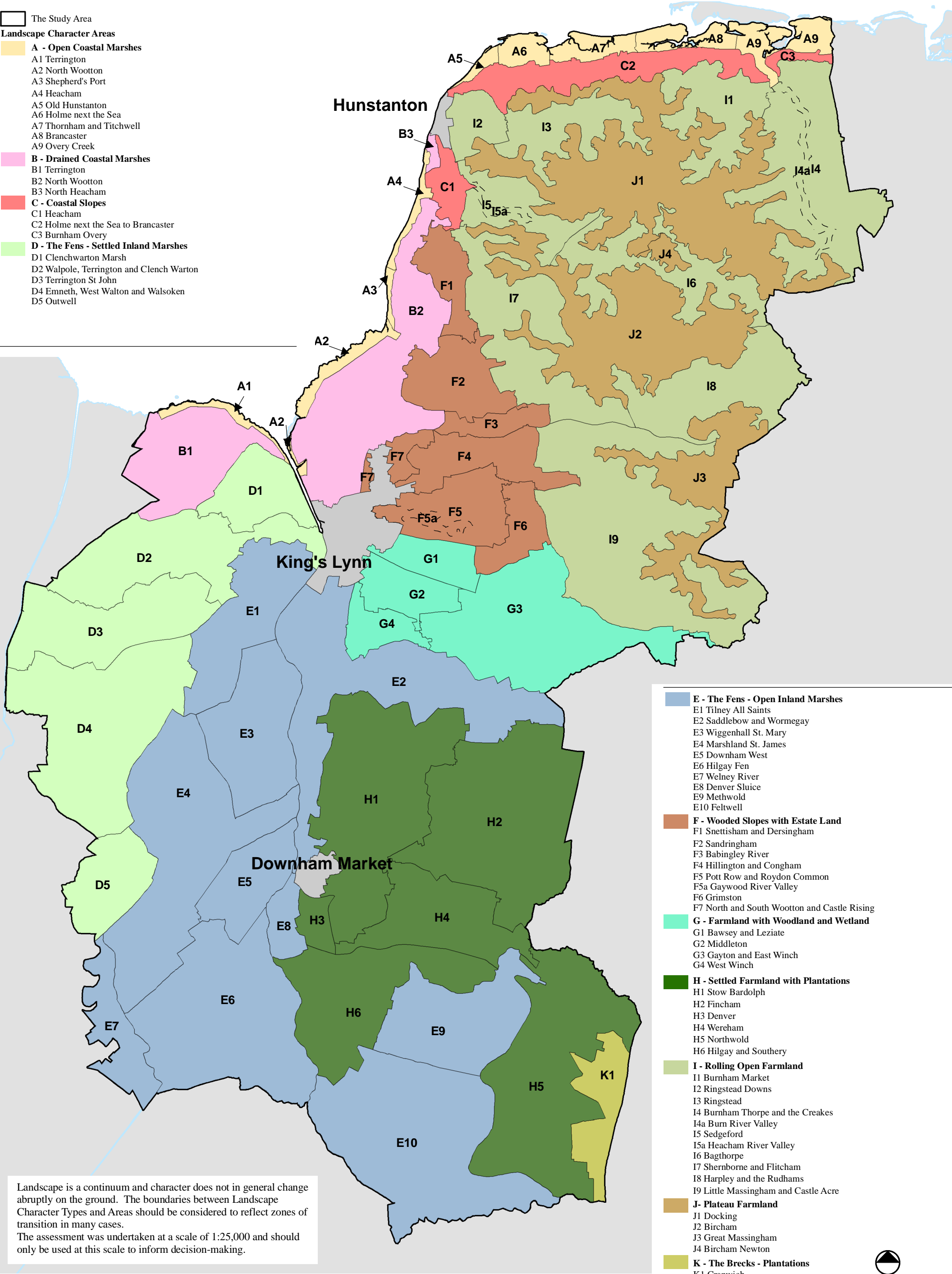
D1 Clenchwarton Marsh

D2 Walpole, Terrington and Clench Warton

D3 Terrington St John

D4 Emneth, West Walton and Walsoken

D5 Outwell



Landscape is a continuum and character does not in general change abruptly on the ground. The boundaries between Landscape Character Types and Areas should be considered to reflect zones of transition in many cases.

The assessment was undertaken at a scale of 1:25,000 and should only be used at this scale to inform decision-making.

This map is based on Ordnance Survey material with the permission of Ordnance Survey on behalf of the Controller of Her Majesty's Stationery Office © Crown copyright. Unauthorised reproduction infringes Crown copyright and may lead to prosecution or civil proceedings. OS Licence Number 100024314 2007, King's Lynn & West Norfolk Council 2007

KING'S LYNN & WEST NORFOLK BOROUGH
LANDSCAPE CHARACTER ASSESSMENT

CHRIS BLANDFORD ASSOCIATES
cba
www.cba.uk.net
March 2007

Figure 3.5
Borough Landscape Character
Types and Areas (1:25,000)

Landscape Character Areas

A - Open Coastal Marshes

- A1 Terrington
- A2 North Wootton
- A3 Shepherd's Port
- A4 Heacham
- A5 Old Hunstanton
- A6 Holme next the Sea
- A7 Thornham and Titchwell
- A8 Brancaster
- A9 Overy Creek

B - Drained Coastal Marshes

- B1 Terrington
- B2 North Wootton
- B3 North Heacham
- C - Coastal Slopes
- C1 Heacham
- C2 Holme next the Sea to Brancaster
- C3 Burnham Overy

D - The Fens - Settled Inland Marshes

- D1 Clenchwarton Marsh
- D2 Walpole, Terrington and Clench Warton
- D3 Terrington St John
- D4 Emneth, West Walton and Walsoken
- D5 Outwell

E - The Fens - Open Inland Marshes

- E1 Tilney All Saints
- E2 Saddlebow and Wormegay
- E3 Wiggenhall St. Mary
- E4 Marshland St. James
- E5 Downham West
- E6 Hilgay Fen
- E7 Welney River
- E8 Denver Sluice
- E9 Methwold
- E10 Feltwell

F - Wooded Slopes with Estate Land

- F1 Snettisham and Dersingham
- F2 Sandringham
- F3 Babingley River
- F4 Hillington and Congham
- F5 Pott Row and Roydon Common
- F5a Gaywood River Valley
- F6 Grimston
- F7 North Wootton and Castle Rising

G - Farmland with Woodland and Wetland

- G1 Bawsey and Leziat
- G2 Middleton
- G3 Gayton and East Winch
- G4 West Winch

H - Settled Farmland with Plantations

- H1 Stow Bardolph
- H2 Fincham
- H3 Denver
- H4 Wereham
- H5 Northwold
- H6 Hilgay and Southery

I - Rolling Open Farmland

- I1 Burnham Market
- I2 Ringstead Downs
- I3 Ringstead
- I4 Burnham Thorpe and the Creakes
- I4a Burn River Valley
- I5 Sedgeford
- I5a Heacham River Valley
- I6 Bagthorpe
- I7 Shernborne and Flitcham
- I8 Harpley and the Rudhams
- I9 Little Massingham and Castle Acre

J - Plateau Farmland

- J1 Docking
- J2 Bircham
- J3 Great Massingham
- J4 Bircham Newton

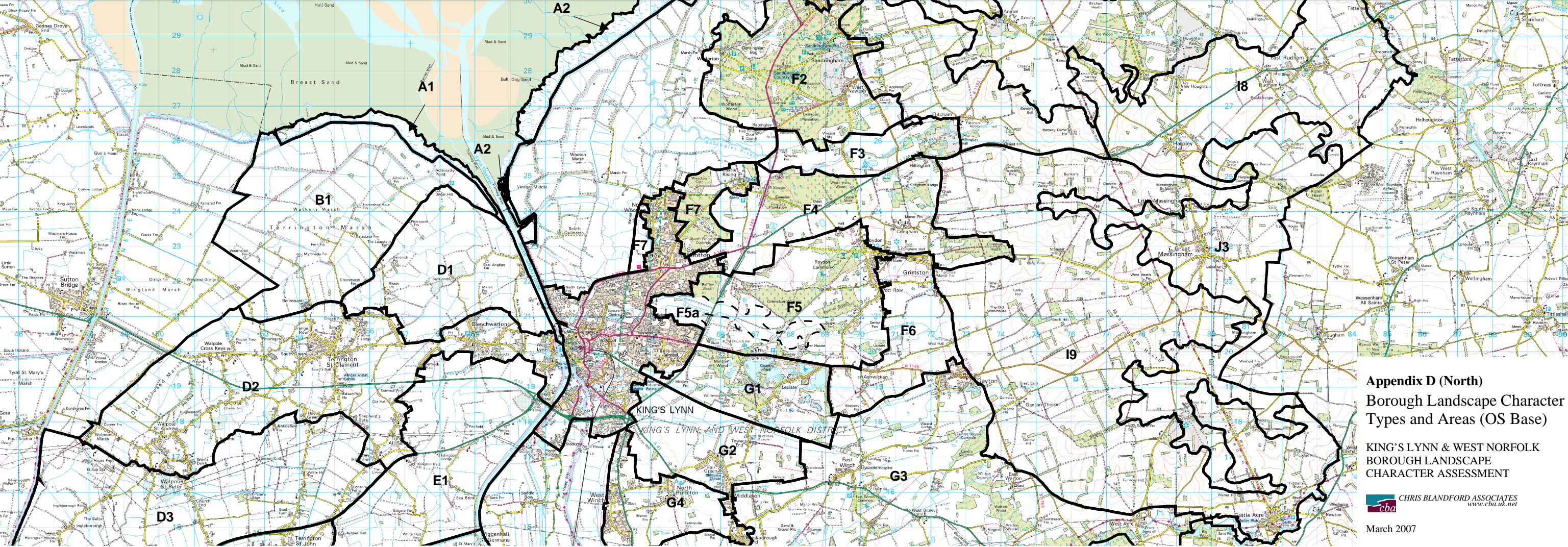
K - The Brecks - Plantations

- K1 Cranwich



This map is based on Ordnance Survey material with the permission of Ordnance Survey on behalf of the Controller of Her Majesty's Stationery Office © Crown copyright. Unauthorised reproduction infringes Crown copyright and may lead to prosecution or civil proceedings. OS Licence Number 100024314 2007, King's Lynn & West Norfolk Council 2007

S:\Projects\11102201_Kings_Lynn_W_Norfolk_LCA\GIS\Projects\FinalRept_March-07\11102201_3_5_LCABoroN_isc.mxd

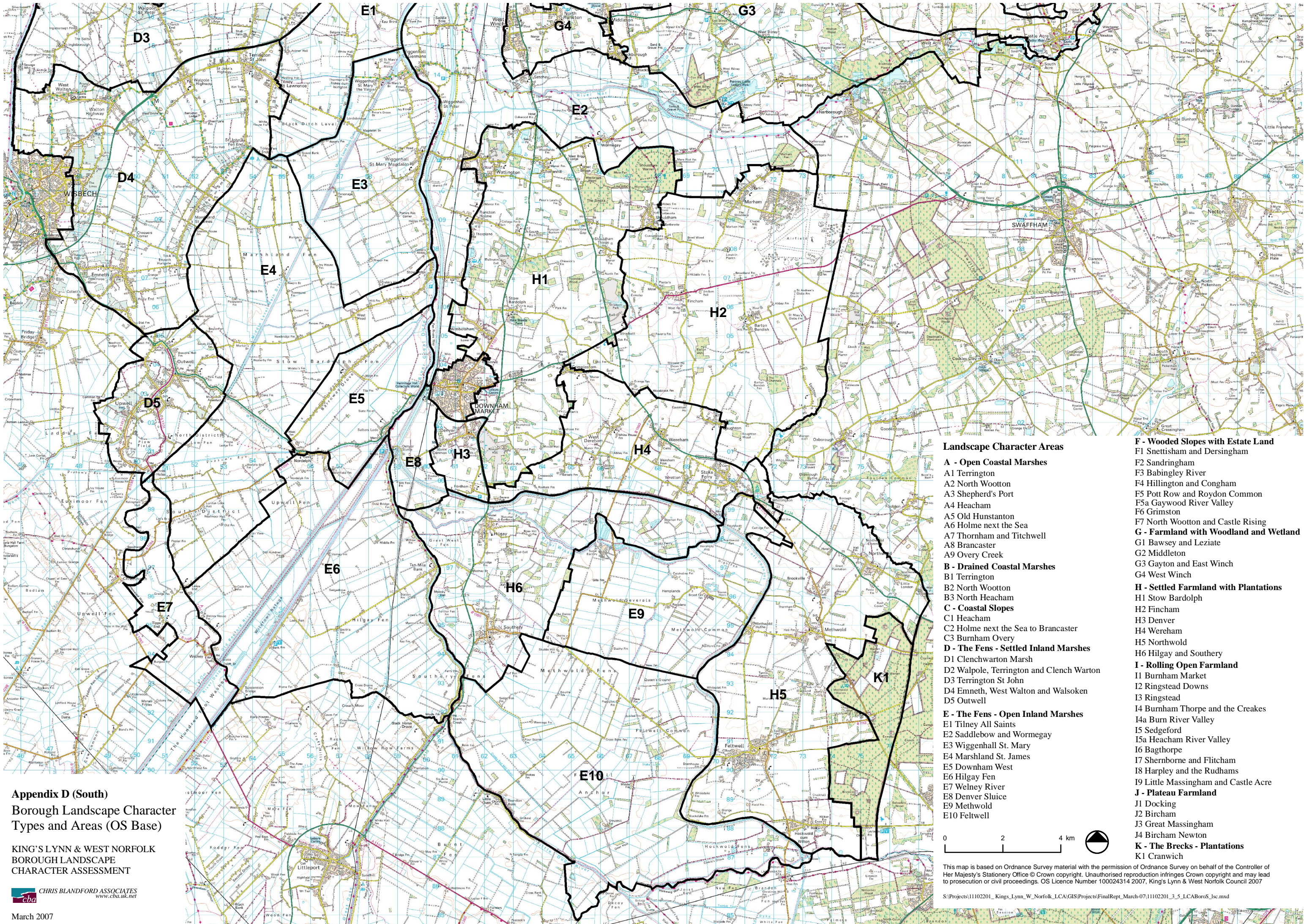


Appendix D (North)
Borough Landscape Character
Types and Areas (OS Base)

KING'S LYNN & WEST NORFOLK
BOROUGH LANDSCAPE
CHARACTER ASSESSMENT

 CHRIS BLANDFORD ASSOCIATES
www.cba.uk.net

March 2007



Appendix D (South)
Borough Landscape Character
Types and Areas (OS Base)

KING'S LYNN & WEST NORFOLK
BOROUGH LANDSCAPE
CHARACTER ASSESSMENT

Landscape Character Areas

- A - Open Coastal Marshes**
A1 Terrington
A2 North Wootton
A3 Shepherd's Port
A4 Heacham
A5 Old Hunstanton
A6 Holme next the Sea
A7 Thornham and Titchwell
A8 Brancaster
A9 Overy Creek
- B - Drained Coastal Marshes**
B1 Terrington
B2 North Wootton
B3 North Heacham
- C - Coastal Slopes**
C1 Heacham
C2 Holme next the Sea to Brancaster
C3 Burnham Overy
- D - The Fens - Settled Inland Marshes**
D1 Clenchwarton Marsh
D2 Walpole, Terrington and Clench Warton
D3 Terrington St John
D4 Emneth, West Walton and Walsoken
D5 Outwell
- E - The Fens - Open Inland Marshes**
E1 Tilney All Saints
E2 Saddlebow and Wormegay
E3 Wiggenhall St. Mary
E4 Marshland St. James
E5 Downham West
E6 Hilgay Fen
E7 Welney River
E8 Denver Sluice
E9 Methwold
E10 Feltwell

- F - Wooded Slopes with Estate Land**
F1 Snettisham and Dersingham
F2 Sandringham
F3 Babingley River
F4 Hillington and Congham
F5 Pott Row and Roydon Common
F5a Gaywood River Valley
F6 Grimston
F7 North Wootton and Castle Rising
- G - Farmland with Woodland and Wetland**
G1 Bawsey and Leziate
G2 Middleton
G3 Gayton and East Winch
G4 West Winch
- H - Settled Farmland with Plantations**
H1 Stow Bardolph
H2 Fincham
H3 Denver
H4 Wereham
H5 Northwold
H6 Hilgay and Southery
- I - Rolling Open Farmland**
I1 Burnham Market
I2 Ringstead Downs
I3 Ringstead
I4 Burnham Thorpe and the Creakes
I4a Burn River Valley
I5 Sedgeford
I5a Heacham River Valley
I6 Bagthorpe
I7 Shernborne and Flitcham
I8 Harpley and the Rudhams
I9 Little Massingham and Castle Acre
- J - Plateau Farmland**
J1 Docking
J2 Bircham
J3 Great Massingham
J4 Bircham Newton
- K - The Brecks - Plantations**
K1 Cranwich

This map is based on Ordnance Survey material with the permission of Ordnance Survey on behalf of the Controller of Her Majesty's Stationery Office © Crown copyright. Unauthorised reproduction infringes Crown copyright and may lead to prosecution or civil proceedings. OS Licence Number 100024314 2007, King's Lynn & West Norfolk Council 2007