



Plate 23: Field 2, looking south-east across the site boundary towards the ruins of St James' Church, Bawsey



Plate 24: Field 2, looking south-east across the site boundary towards the ruins of St James' Church, Bawsey (zoomed view)



Plate 25: Field 2, looking south-south-east from western boundary across the field towards the ruins of St James' Church, Bawsey



Plate 25a: View from the ruins of St James' Church Bawsey towards Reffley Wood and Field 2, looking north-west ©The Reffley Wood Barrow Project



Plate 26: Field 2, looking south towards the southern end of the field

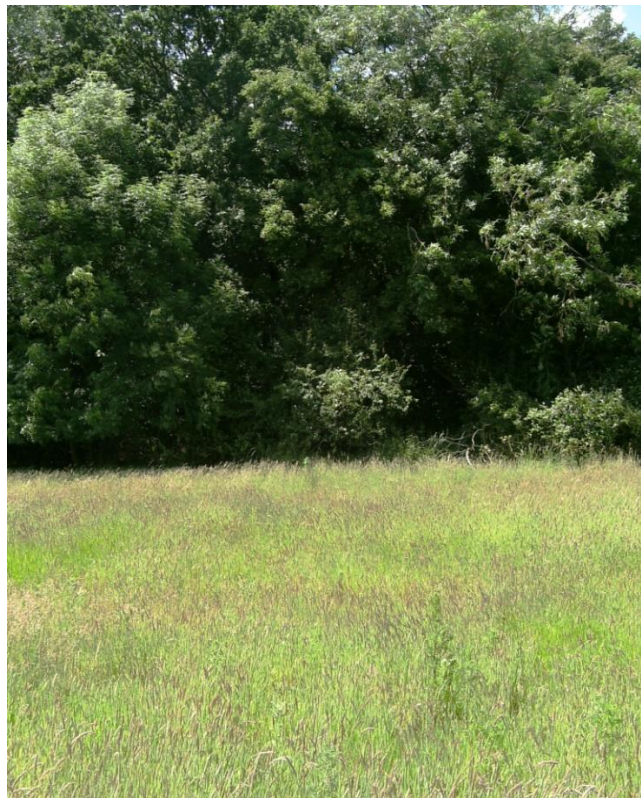


Plate 27: Field 2, looking west towards Refley Wood across an area of probable archaeological activity identified by geophysical survey



Plate 27a: Field 2, looking north-west across the ditch of the barrow excavated in 1938 ©The Reffley Wood Barrow Project



Plate 28: Field 2, earthwork bank on western boundary of field, looking north-west



Plate 29: Field 2, parallel earthwork banks and ditch on western boundary, looking west into Reffley Wood



Plate 30: Field 2, parallel earthwork banks and ditch on western boundary, looking east into the site from Reffley Wood



Plate 31: Field 2, ditch and earthwork bank on western boundary of the field, looking north-west



Plate 32: The Grade II listed Rising Lodge, looking south-west



Plate 32a: The Grade II listed Rising Lodge, looking west



Plate 33: View towards Castle Rising from Knight's Hill Hotel entrance, looking north-west



Plate 34: View towards Castle Rising from Knight's Hill Hotel entrance, looking north



Plate 35: View towards Castle Rising from Knight's Hill Hotel entrance, looking north-east



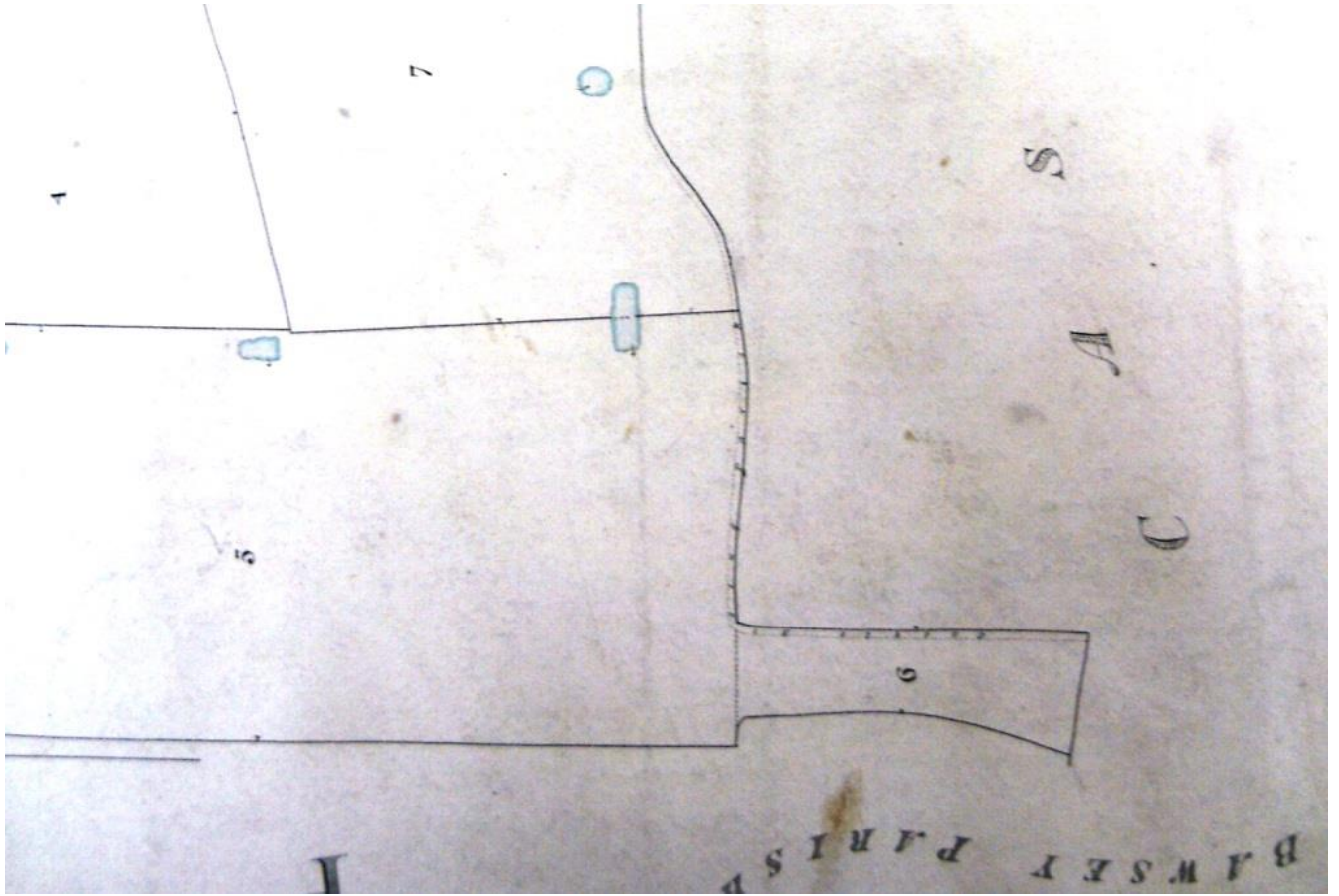


Plate 36: Detail of the tithe map of South Wootton, showing boundaries revealed during the field assessment and the geophysical survey



Plate 37: Satellite photograph of Knight's Hill Hotel and its environs, dated 2006 ©Google Earth



Plate 38: Satellite photograph of Knight's Hill Hotel and its environs, dated 2007 ©Google Earth