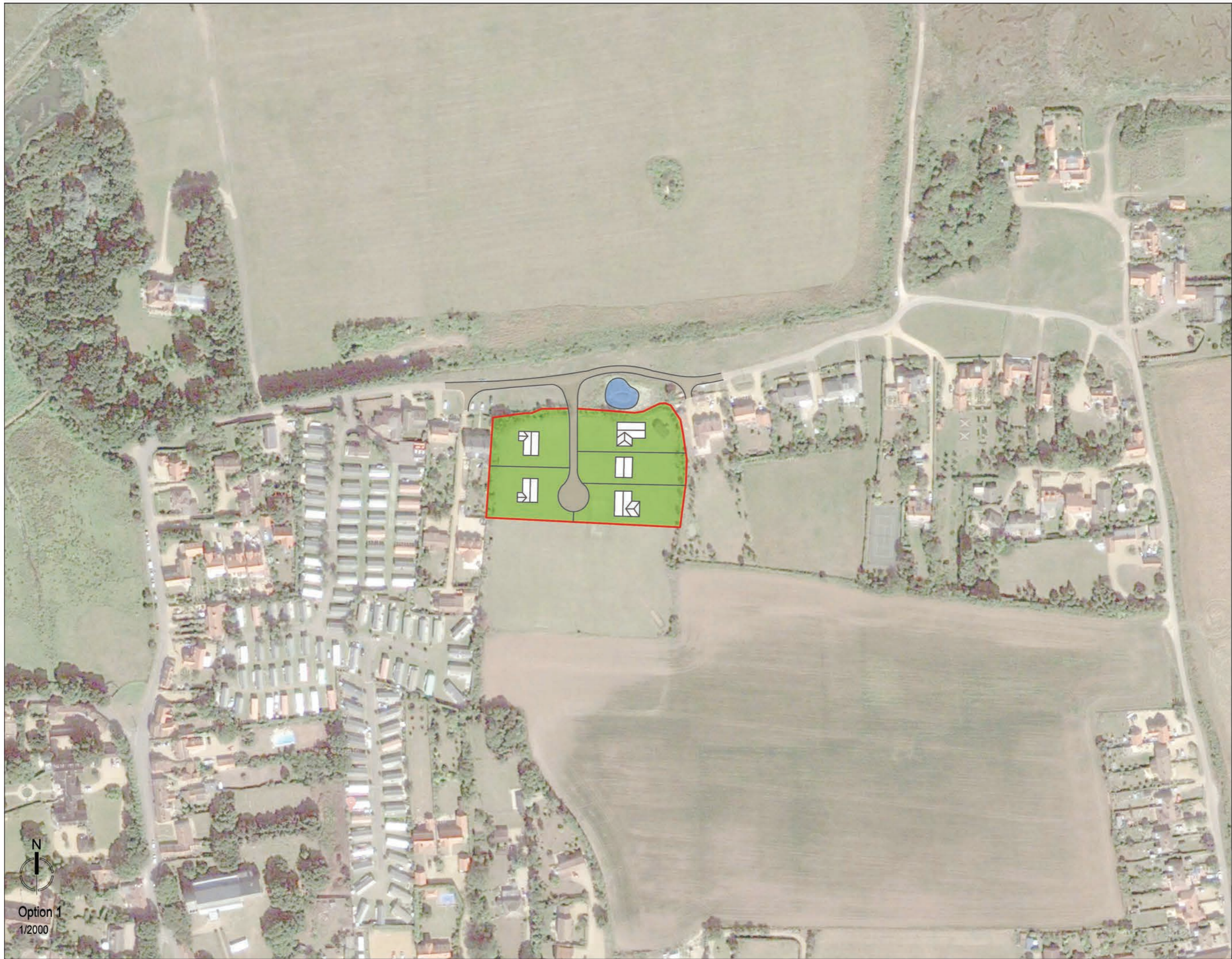

Issue 46: Thornham

Ian Reilly (906) – Fleur Developments



**Appendix 4 –Indicative Development
Options**



Option 1
1/2000

Note

SUMMARY

PROJECT TITLE
Res. Allocation Thomham

PROJECT NUMBER
0473 Thomham EIP Repls.

CLIENT
Fleur Developments

DRAWING TITLE
Option 1

DRAWING NUMBER REV
 -

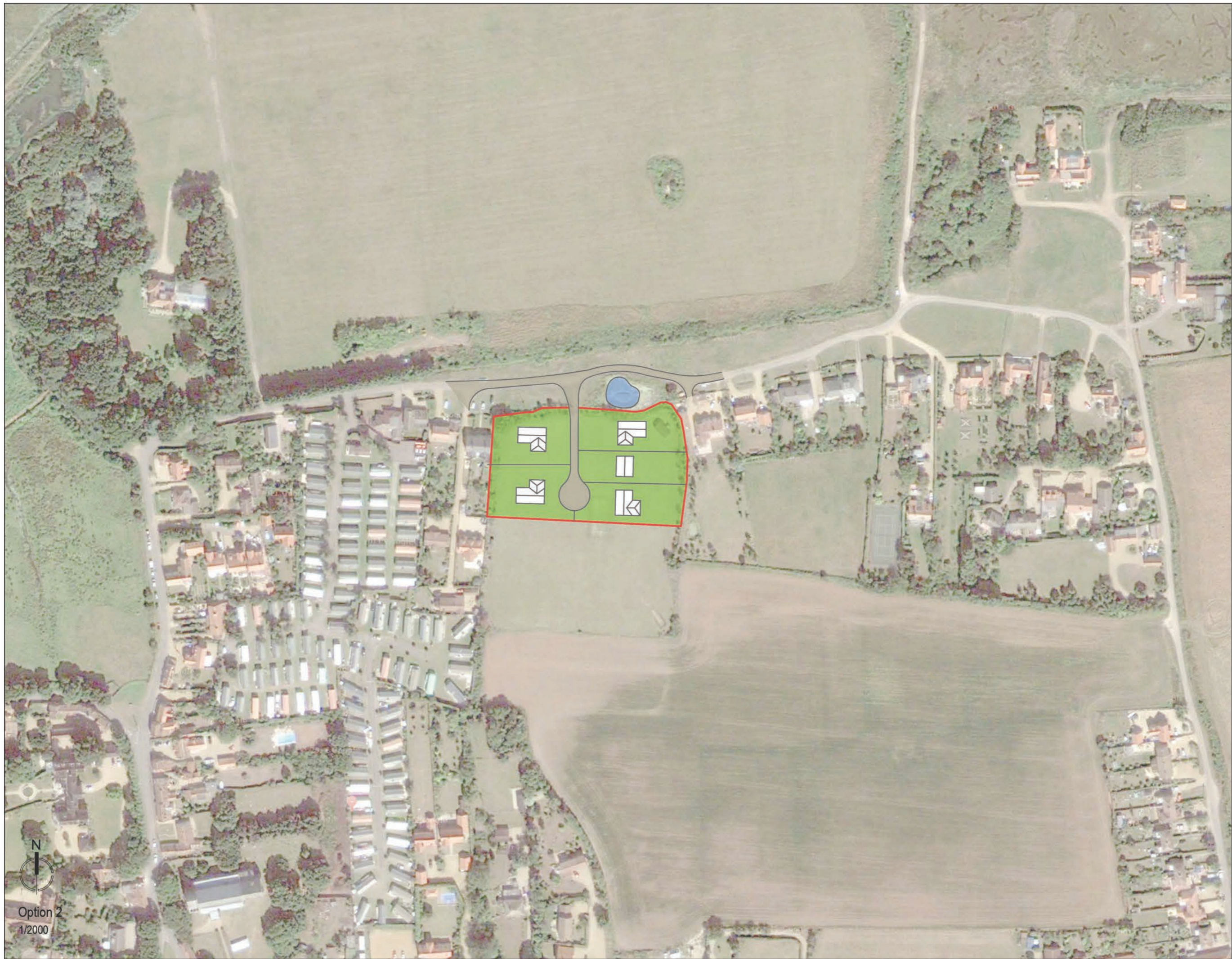
SCALE
1/2000

DATE
19/06/15

DRAWN BY
JBA

Lanpro»
Planning and Development Consultants

Brettingham House, 98 Pottergate,
Norwich, NR2 1EQ
01603 628 464
www.lanproservices.co.uk



Option 2
1/2000

Note

SUMMARY

PROJECT TITLE
Res. Allocation Thornham

PROJECT NUMBER
0473 Thornham EIP Repls.

CLIENT
Fleur Developments

DRAWING TITLE
Option 2

DRAWING NUMBER	REV

SCALE
1/2000

DATE
19/06/15

DRAWN BY
JBA

Lanpro
Planning and Development Consultants

Brettingham House, 98 Pottergate,
Norwich, NR2 1EQ
01603 628 464
www.lanproservices.co.uk



Note

SUMMARY

PROJECT TITLE
Res. Allocation Thornham

PROJECT NUMBER
0473 Thornham EIP Repls.

CLIENT
Fleur Developments

DRAWING TITLE
Option 3

DRAWING NUMBER	REV
	-

SCALE
1/2000

DATE
19/06/15

DRAWN BY
JBA

Lanpro
Planning and Development Consultants

Brettingham House, 98 Pottergate,
Norwich, NR2 1EQ
01603 628 464
www.lanproservices.co.uk



Option 3
1/2000



Option 4
1/2000

Note

SUMMARY

PROJECT TITLE
Res. Allocation Thornham

PROJECT NUMBER
0473 Thornham EIP Repls.

CLIENT
Fleur Developments

DRAWING TITLE
Option 4

DRAWING NUMBER	REV
	-

SCALE
1/2000

DATE
19/06/15

DRAWN BY
JBA



Planning and Development Consultants
Brettingham House, 98 Pottergate,
Norwich, NR2 1EQ
01603 628 464
www.lanproservices.co.uk



Note
SUMMARY

PROJECT TITLE
Res. Allocation Thornham

PROJECT NUMBER
0473 Thornham EIP Repls.

CLIENT
Fleur Developments

DRAWING TITLE
Option 5

DRAWING NUMBER	REV
	-

SCALE
1/2000

DATE
19/06/15

DRAWN BY
JBA

Lanpro
Planning and Development Consultants

Brettingham House, 98 Pottergate,
Norwich, NR2 1EQ
01603 628 464
www.lanproservices.co.uk



Option 5
1/2000

Issue 46: Thornham

Ian Reilly (906) – Fleur Developments



**Appendix 5 – Preferred Options Policy
Text and Map**
