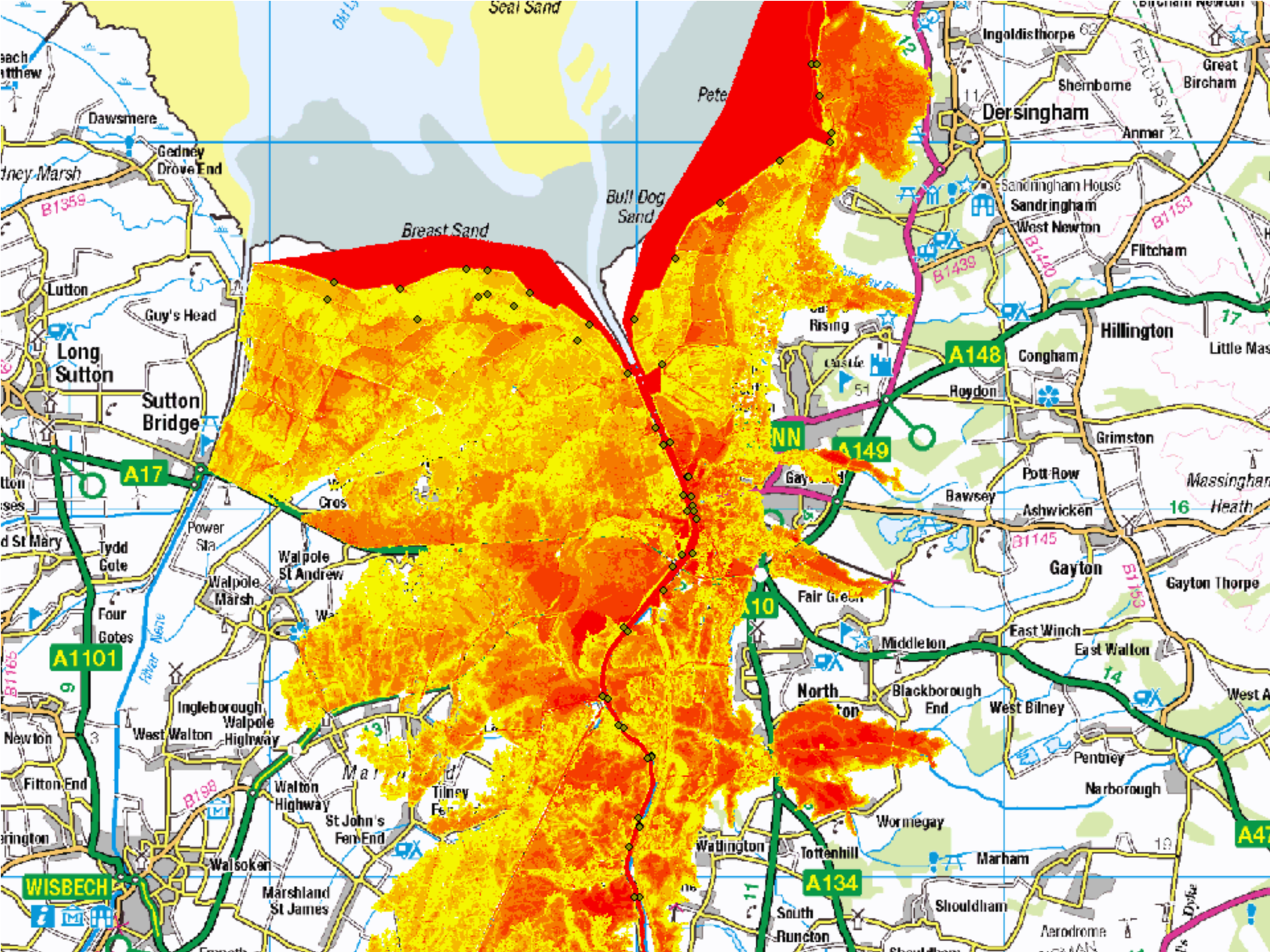


# Tidal Breach Mapping

2015 update



# Update

The update to the Tidal Hazard Mapping (2009) was carried out to :

- Confirm breach methodologies utilised
- Update the hydrology
- Expand the coverage

# Outcomes

- Breach Methodology
  - Flood depth and extents are predominately dependent upon the length of time the breach is open for.
- Increased understanding of the residual risk from Hunstaton to Earith
- Limitations
  - No update to the River Nene Modelling
  - No update to the in channel flood levels
  - No analysis on the probability of a breach occurring