

## The Pilgrimage Trail & The Walks

The Pilgrimage Trail public art project was commissioned by the Borough Council of King's Lynn and West Norfolk as part of the £4.3 million restoration of The Walks park, the only surviving example of an 18th century town walk in Norfolk. The development of the trail was supported by King's Lynn Arts Centre, Norfolk Museums & Archaeology Service and Commissions East.

### Visitor information

#### King's Lynn Tourist Information Centre

The Custom House  
Purfleet Quay, King's Lynn PE30 1HP.  
01553 763044  
Email: kings-lynn.tic@west-norfolk.gov.uk

### Public Transport

Mainline trains from Cambridge and London King's Cross  
**National Rail Enquiry Line:**  
0845 748 4950  
**Local & national bus information:**  
0871 200 2233

### Access

Not all sites are fully accessible. Please contact King's Lynn Tourist Information Centre for details.

### Visitor web site

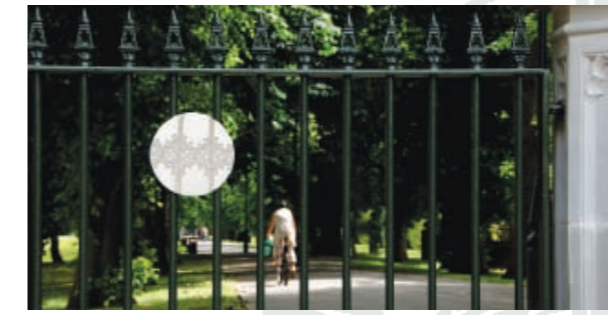
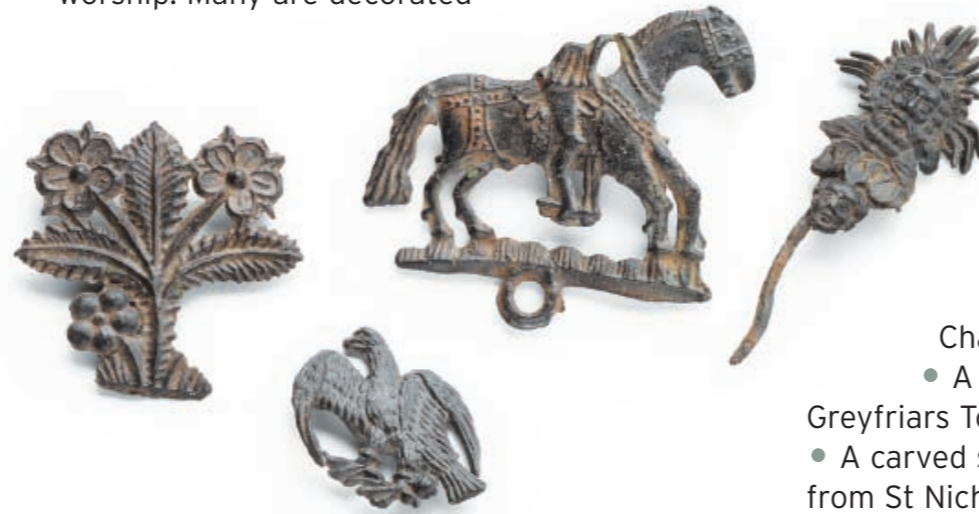
[www.visitwestnorfolk.com](http://www.visitwestnorfolk.com)



## Producing the Pilgrimage Trail

Artist Lyndall Phelps created the artworks for the Pilgrimage Trail to link the restored Red Mount Chapel in The Walks with other medieval buildings in the town.

She was initially inspired by the wonderful collection of medieval metal pilgrim badges in Lynn Museum. These intriguing objects were produced in large numbers and sold to pilgrims to promote individual religious shrines and sites of worship. Many are decorated



with the designs of buildings or symbols associated with particular medieval shrines and centres of pilgrimage.

Details found in the fine medieval buildings of King's Lynn also provided inspiration for the designs that the artist would eventually use to create the Pilgrimage Trail including:

- A wooden ceiling boss showing a seated Christ from All Saints' Church.
- A dog pictured on a monumental brass from St Margaret's Church.
- Designs from the fine ceiling of the Red Mount Chapel.
- A decorated stone corbel from Greyfriars Tower.
- A carved ship on a wooden bench end from St Nicholas' Chapel.



These designs now feature on a series of brushed stainless steel plaques located on or near the buildings with which they are associated. The designs have also been reproduced on stickers and paper bags.



## King's Lynn Pilgrimage Trail

Walking in the footsteps of medieval craftsmen



# Welcome to the King's Lynn Pilgrimage Trail

Explore the rich medieval heritage of King's Lynn by following the Pilgrimage Trail, featuring a series of specially designed steel plaques that guide you to some of the most fascinating medieval buildings in the town.

These unique plaques were created by artist Lyndall Phelps. The designs were inspired by details from the historic buildings where they are located.

The Lynn Museum is a good place to start your tour. You can see a full set of plaques near the museum entrance.

## All Saints' Church

All Saints' Church is the oldest church in King's Lynn, largely rebuilt in the 14th century. This plaque was inspired by a wooden ceiling boss showing a seated figure of Christ.

For further information please visit [www.allsaintskingslynn.org.uk](http://www.allsaintskingslynn.org.uk)

Permission to reproduce Christ in Majesty kindly given by All Saints' Church



## St Margaret's Church

A fine collection of medieval brasses in the church includes one from 1364 showing Robert Braunché, a former mayor of Lynn, with his wives, Letitia and Margaret. The dog sitting at Letitia's feet provided the inspiration for this plaque.

For further information please visit [www.stmargaretskingslynn.org.uk](http://www.stmargaretskingslynn.org.uk)

Permission to reproduce this detail kindly given by St Margaret's Church



## Red Mount Chapel

The late 15th century Red Mount Chapel was a wayside chapel for pilgrims on their way to the shrine of Our Lady of Walsingham. The upper chapel of 1506 has a fan vaulted roof, further decorated with quatrefoils which inspired the design of the plaque.

Limited opening. For further information please visit [www.visitwestnorfolk.com](http://www.visitwestnorfolk.com)

## St Nicholas' Chapel

The 15th century ship featured on the plaque is from a wooden benchend from St Nicholas', which is now on display in the Town House Museum (on loan from the Victoria and Albert Museum). The ship highlights King's Lynn's rich maritime past.

Limited opening. For further information please visit [www.visitwestnorfolk.com](http://www.visitwestnorfolk.com)



## Lynn Museum

The important collection of medieval pilgrim badges on display at Lynn Museum mostly come from the river mud of Lynn's Purfleet. They were probably lost by pilgrims on their way to the shrine at Walsingham. The "West Norfolk Story" gallery explores medieval life and pilgrimage in the town.

Open Tues-Sat 10-5.

For more information visit [www.museums.norfolk.gov.uk](http://www.museums.norfolk.gov.uk)



All plaque designs © Lyndall Phelps 2008  
Photography by David Kirkham  
Medieval frieze by Kerry Buck

Please note that site opening arrangements and entry charges may be subject to change. For current information please visit recommended websites or contact King's Lynn Tourist Information Centre Tel.01553 763044.

- 1 Lynn Museum
- 2 Red Mount Chapel
- 3 Greyfriars
- 4 All Saints Church
- 5 St Margaret's Church
- 6 Town House Museum
- 7 The Purfleet
- 8 St Nicholas' Chapel

